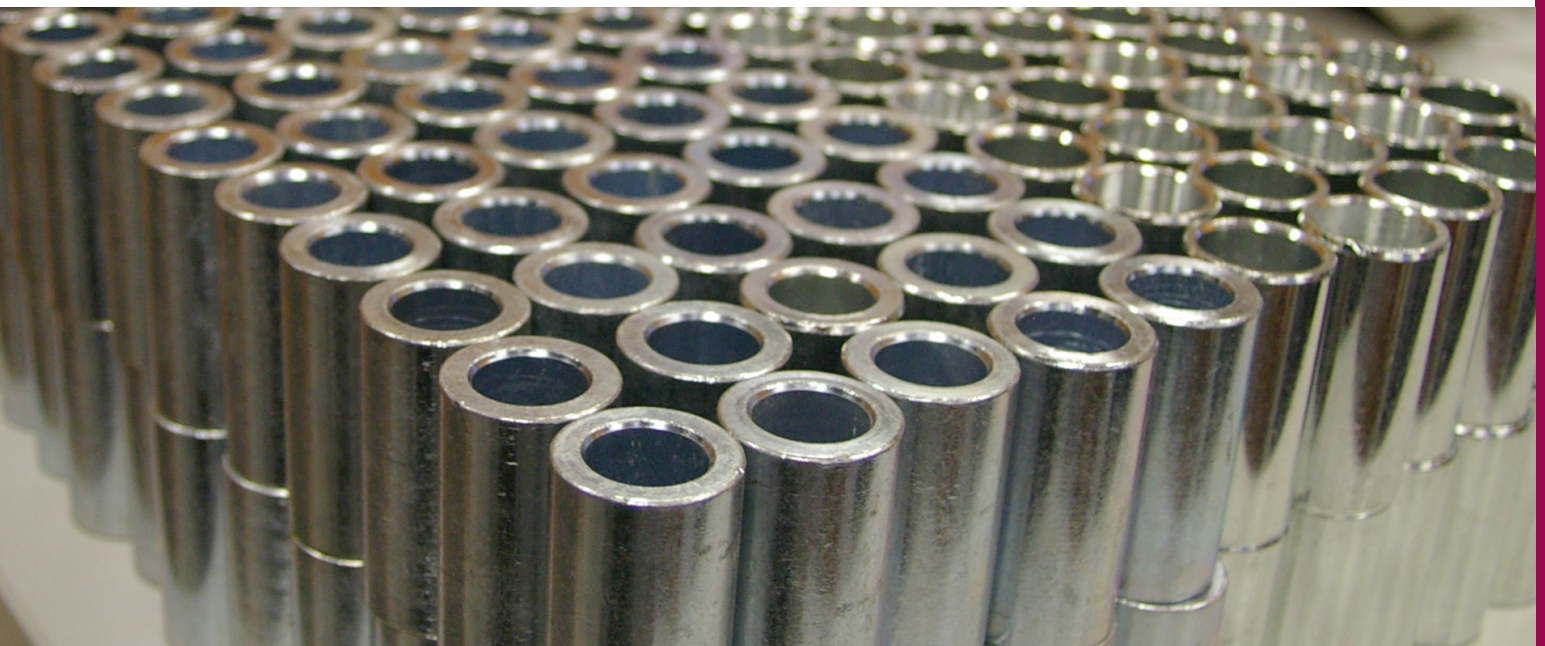


Crush Tubes



- 11mm ID
- 12mm ID
- 13mm ID
- 14mm ID
- 16mm ID
- 18mm ID
- 19mm ID
- 20mm ID
- 22mm ID
- 24mm ID
- 25mm ID





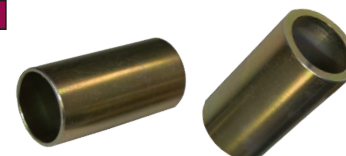
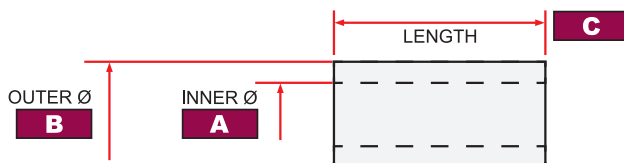
REPLACEMENT STEEL CRUSH TUBES

PART NO.	A	B	C
11mm ID			
CT35-11	11.1	14.3	35
CT151	11.5	16	34.5
12mm ID			
CT35-12	12	16	35
CT38-12	12.8	16	38
CT42	12.2	19	42
CT42-13	12.8	16	42
CT45-12	12.8	16	45
CT50-12	12.8	16	50
CT80	12.2	19	80
CT708	12	16	40
CT709	12	16	38
CT710	12	19	45
CT711	12.2	19	40
CT712	12.3	16	31.5
CT713	12.8	19	57
CT739	12.3	20	40
CT790	12.2	19	38
CT800	12.2	19	48
CT836	12.2	20	66
CT841	12.3	20	48
13mm ID			
CT35	13.2	16	35
CT45-13	13.2	19	45
CT714	13	19	63
CT785	13.2	19	53

PART NO.	A	B	C
14mm ID			
AM12-40	14	18	32
CT34	14.3	19	34
CT36-14	14.3	19	36.4
CT38-14	14.3	19	38
CT48-14	14.3	19	48
CT50-14	14	19	50
CT55-14	14.3	19	55
CT567	14.5	19	89
CT715	14.3	19	40
CT716	14.3	19	42
CT717	14.3	22.2	40
CT718	14.3	19	43
CT837	14.4	20.5	44.5
16mm ID			
404638	16	24	51
405643	16.4	21	51
CT40-16	16	19	40
CT48	16	19	48
CT460	16	25.4	50
CT463	16	22.2	83
CT50	16	19	50
CT50-22	16	22.2	50
CT53	16	22.2	53
CT70-16	16	22.2	70
CT100	16	22.2	100

LEGEND

CRUSH TUBE MEASUREMENTS





REPLACEMENT STEEL CRUSH TUBES

PART NO.	A	B	C
16mm ID (cont.)			
CT305	16	22.2	45
CT639	16.3	25.4	58
CT719	16	19	34
CT720	16	19	37
CT721	16.2	20	57
CT722	16.3	22	63
CT731	16.2	22.2	90
CT740	16.3	25.4	105
CT855	16	22.2	66
CT975	16	20	42
18mm ID			
CT240	18.1	22.2	45
19mm ID			
405703	19.3	24	44.5
45278	19.2	24	44.5
CT10	19.4	25.4	45
CT391	19.5	29	57
CT40-19	19	22.2	40
CT45	19.4	22.2	45
CT50-19	19.4	22.2	50
CT57	19.4	22.2	57
CT537	19	28	81.5
CT538	19	28	96.5
CT741	19	28	62

PART NO.	A	B	C
20mm ID			
CT44	20	22.2	44
CT45-20	20	25.4	45
CT459	20	25.4	50
CT50-24	20	23.8	50
CT513	20	22.2	50
CT523	20	25.4	105
CT55	20	25.4	55
CT60-20	20.2	25	60
CT62	20.5	28.6	62
CT678	20	25.4	78
CT679	20	25.4	68
22mm ID			
CT81	22.2	25.4	44.5
CT732	22.2	25.4	58
24mm ID			
CT58	24	28.6	58
CT58-30	24.1	30	58
CT904	24	28.9	55
25mm ID			
CT743	25.4	30.5	50

LEGEND

CRUSH TUBE MEASUREMENTS

Note: Refer to table columns: A, B, C
All dimensions are in millimeters

